



GMT MONTHLY MEMBERSHIP PROGRESS REPORT

Results as of: 11/30/2025

Multiple District 11

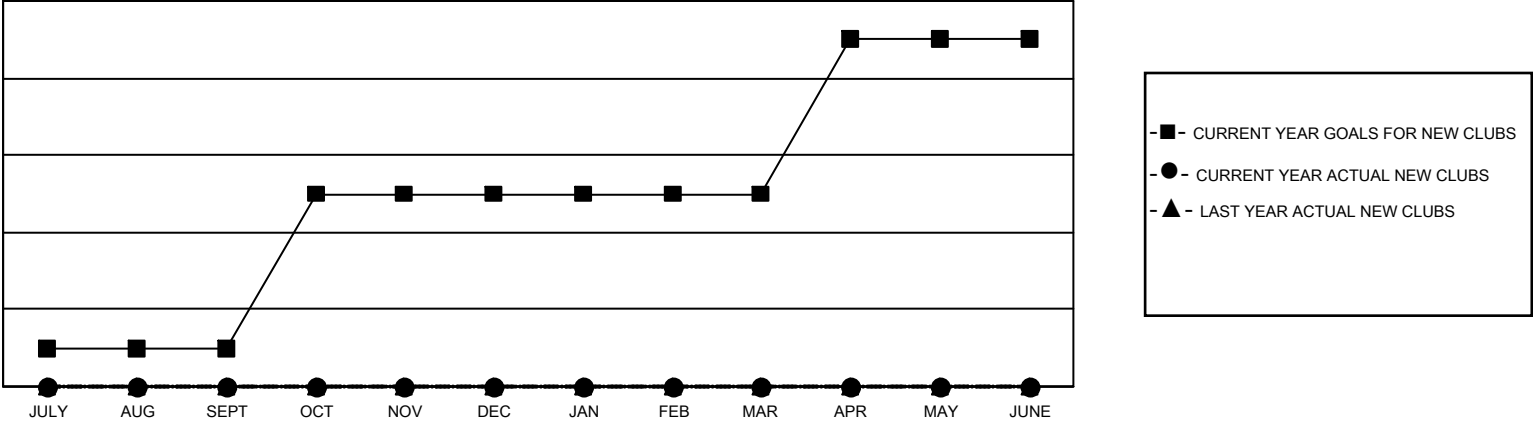
LOCATION: MICHIGAN

GMT: OPEN

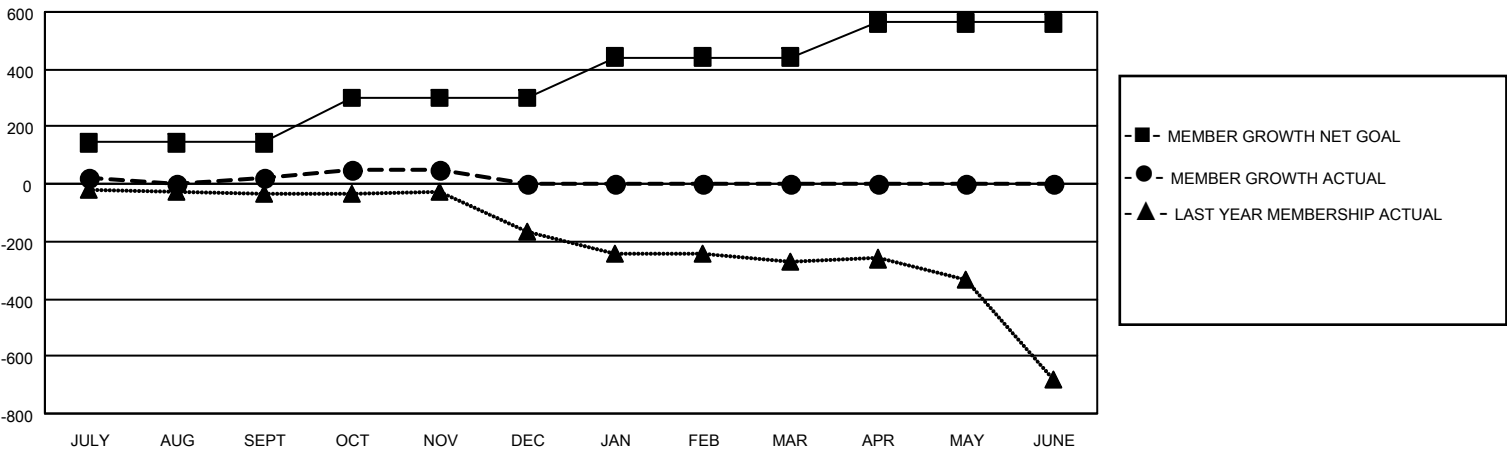
GMT CA 1

Clubs				Members			
RESULTS FOR 2025-2026				RESULTS FOR 2025-2026			
QUARTER	NEW CLUB GOAL	NEW CLUBS	DROPPED CLUBS	QUARTER	MEMBER GROWTH NET GOAL	MEMBER GROWTH ACTUAL	DROPPED MEMBERS ACTUAL (including transfers)
JULY/AUG/SEPT	1	0	3	JULY/AUG/SEPT	144	222	167
OCT/NOV/DEC	4	0	1	OCT/NOV/DEC	156	174	131
JAN/FEB/MAR	0	0	0	JAN/FEB/MAR	143	0	0
APR/MAY/JUNE	4	0	0	APR/MAY/JUNE	119	0	0

GOALS AND ACTUAL NEW CLUBS CUMULATIVE



GOALS AND ACTUAL MEMBERS CUMULATIVE



DROPPED CLUBS: 4

117 CLUBS OF 324 ADDED 1 OR MORE NEW MEMBERS

GENDER DISTRIBUTION

MALE 5,261 (63.50%)  
FEMALE 3,024 (36.50%)

DROPPED MEMBERS

DECEASED 52  
CLUB CANCELLED 3  
OTHER 242  
TOTAL 297

[CLICK HERE FOR CUMULATIVE MEMBERSHIP DATA](#)

TOTAL FAMILY UNIT MEMBERS 1,668  
FAMILY MEMBERS PAYING HALF DUES 849